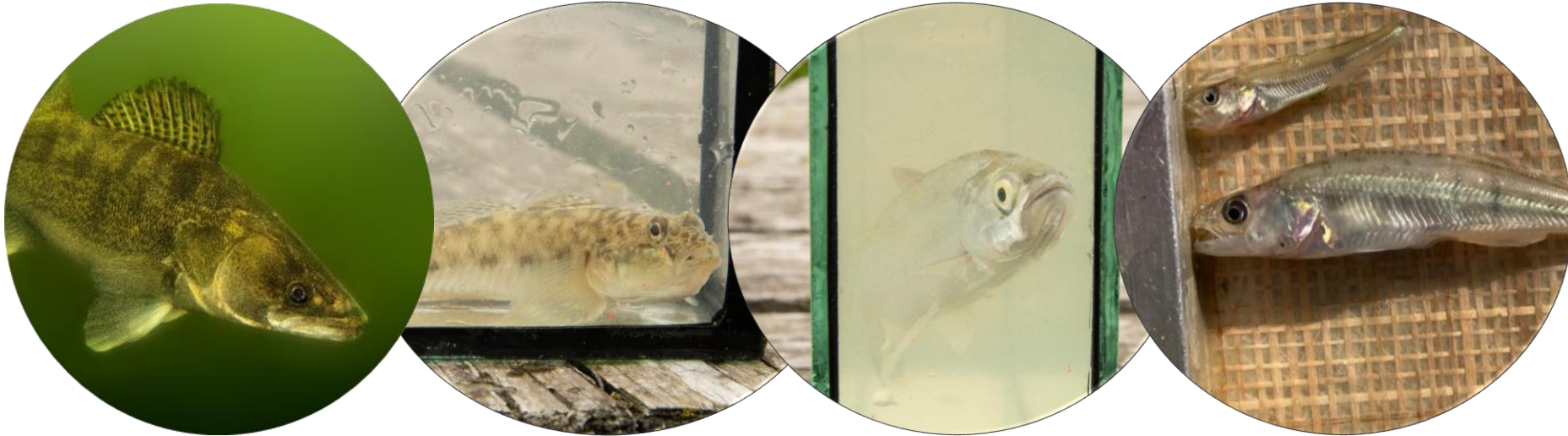


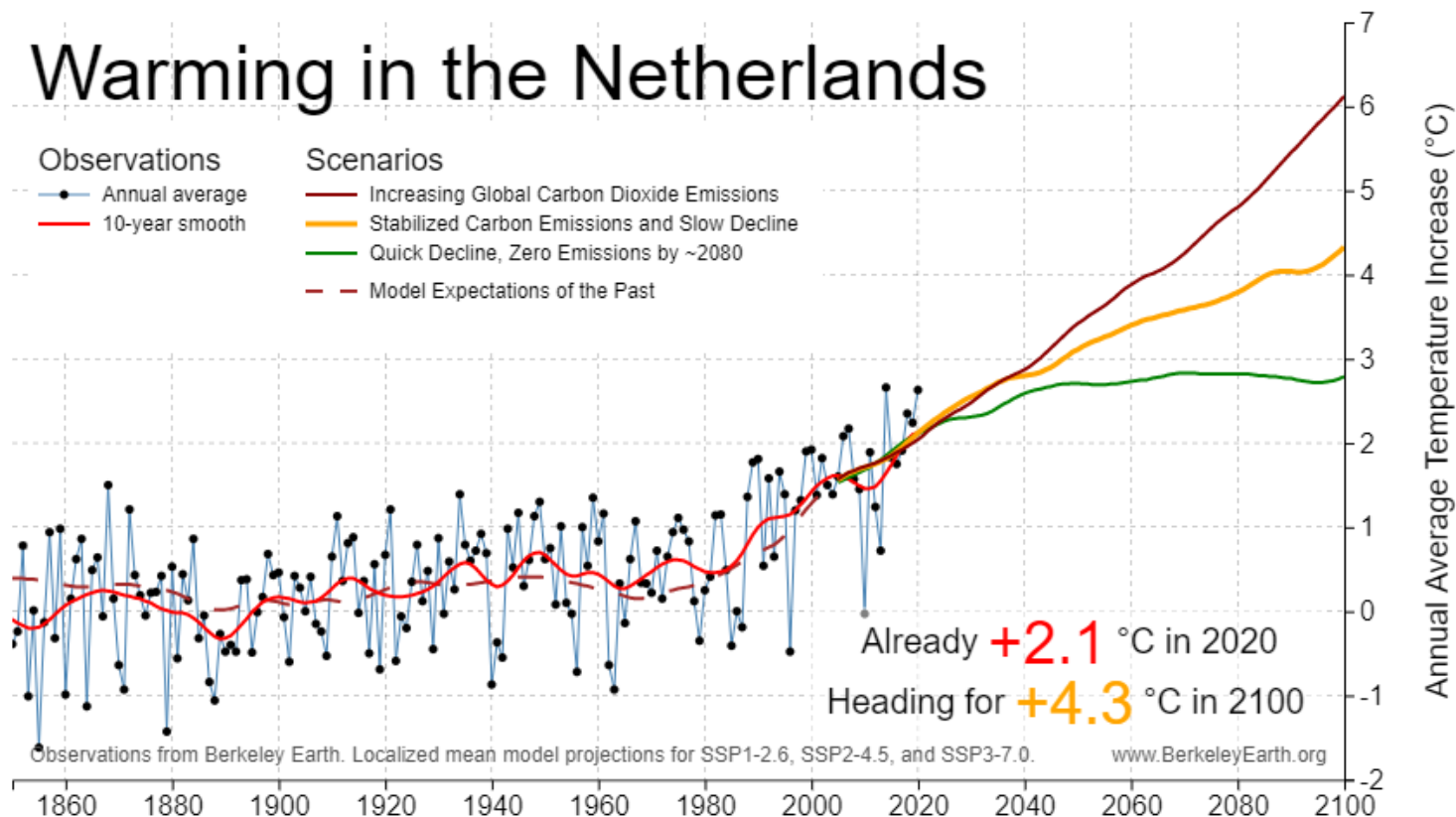
Klimaateffect IJsselmeergebied

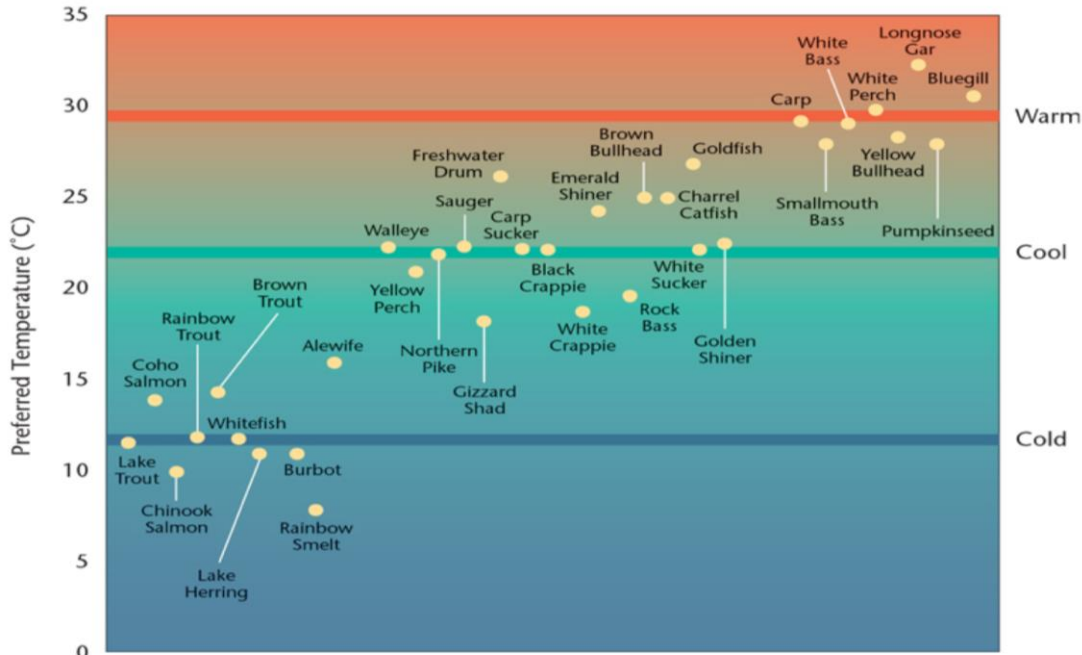
Geleidelijke en sprongsgewijze klimaateffecten op de visstand in het IJsselmeergebied

Joep de Leeuw & Joey Volwater



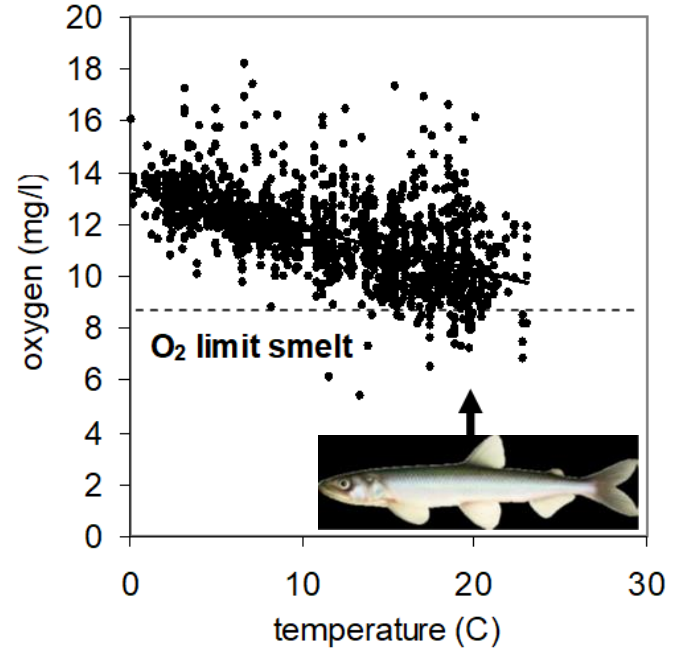
Warming in the Netherlands



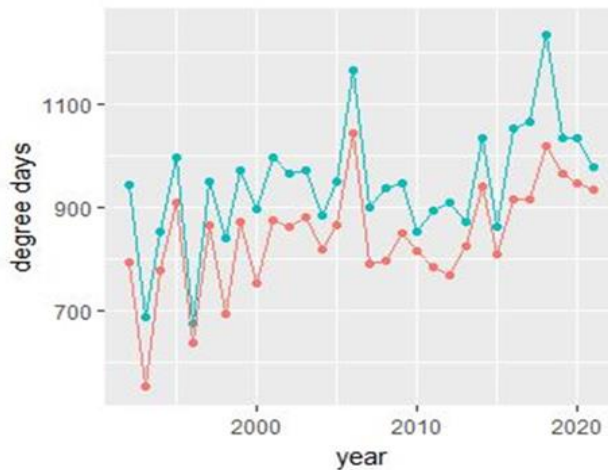
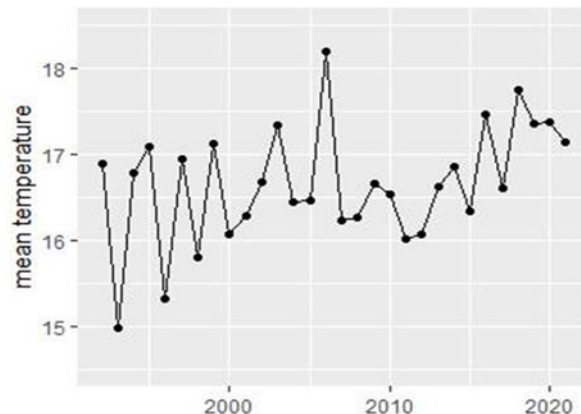
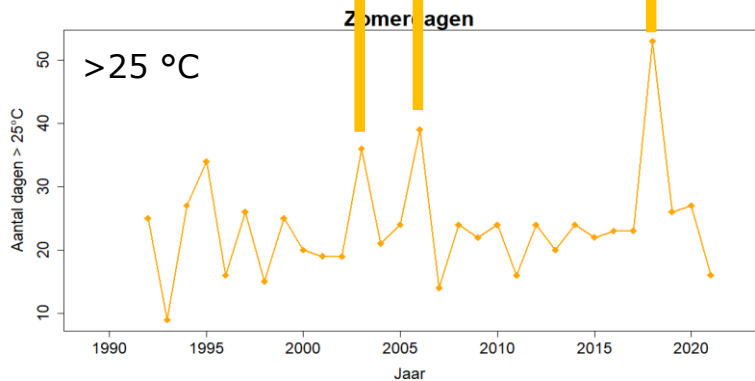
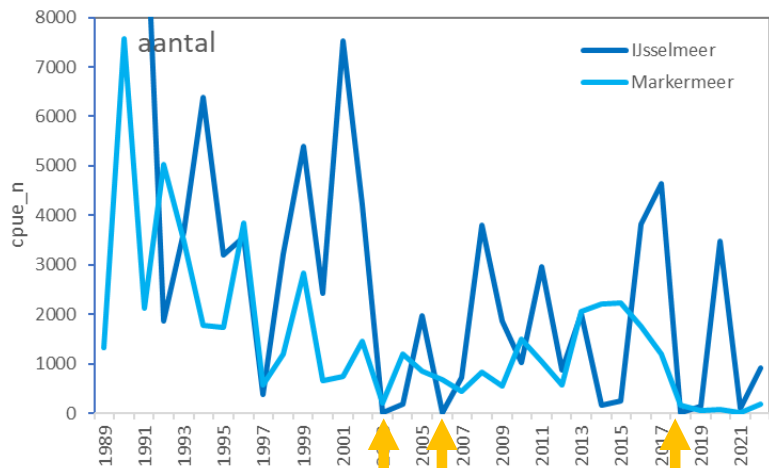


Source: Based on information provided by Brian Shuter
Credit: Amanda Wait/DG Communications

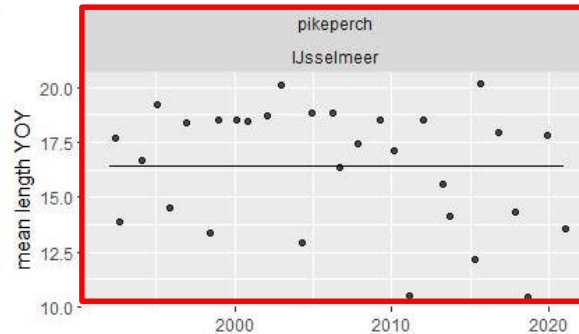
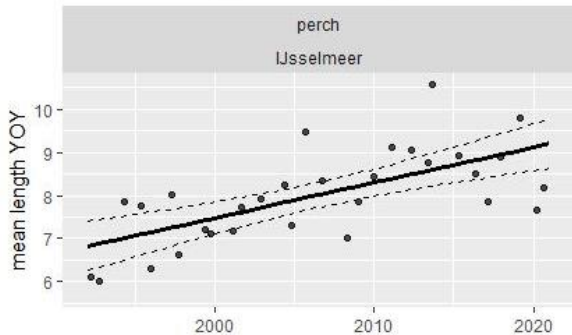
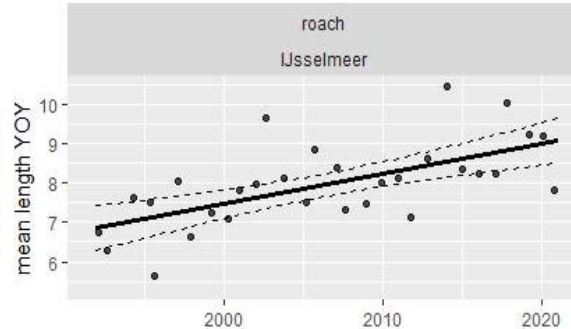
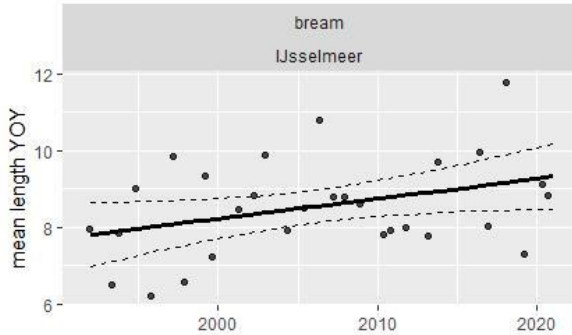
spiering



spiering



Veranderingen in groei



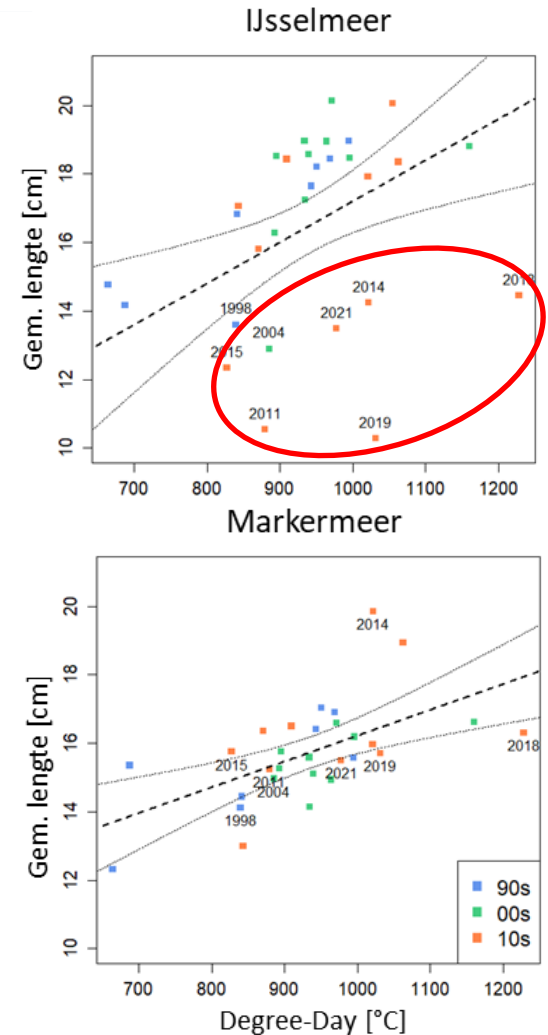
- Toename gemiddelde lengte nuljarige vis;

- Baars
- Blankvoorn
- Brasem

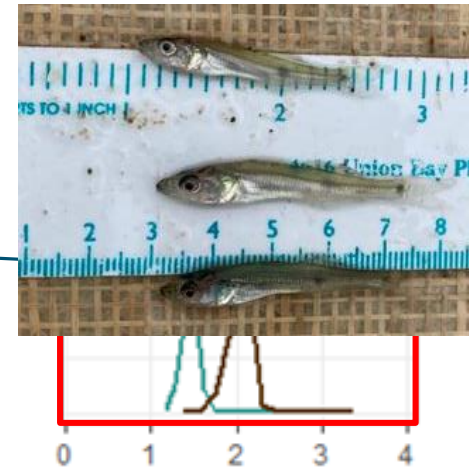
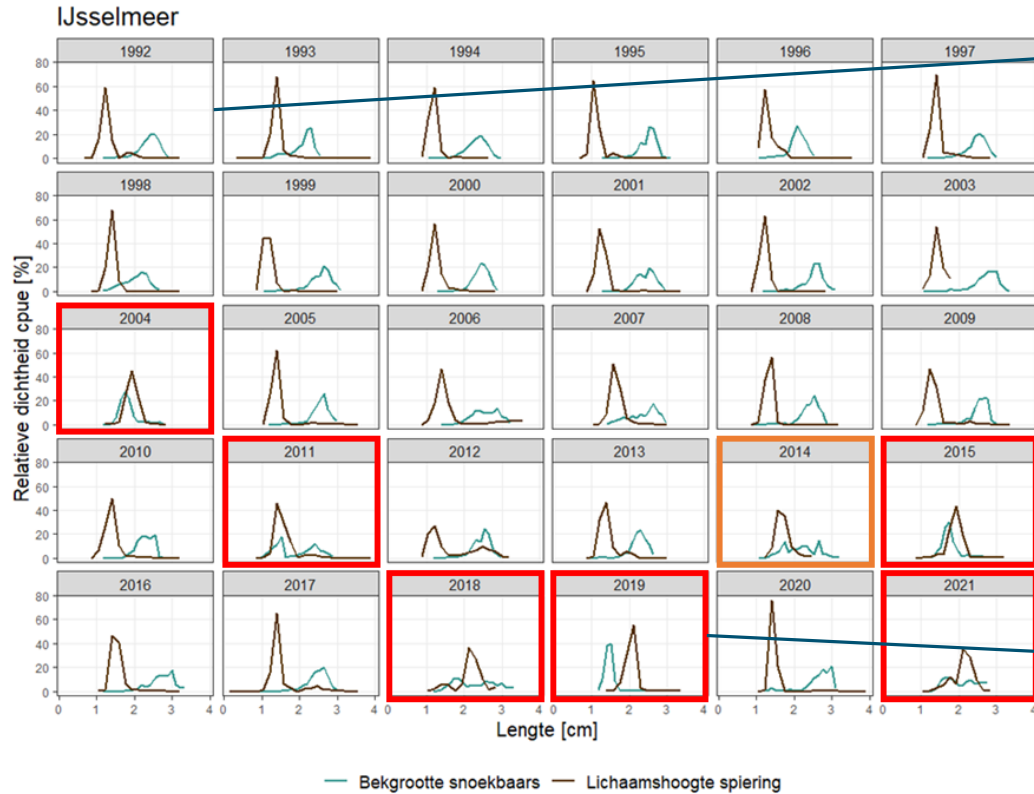
- Ook oudere leeftijdsklassen

Groei van snoekbaars

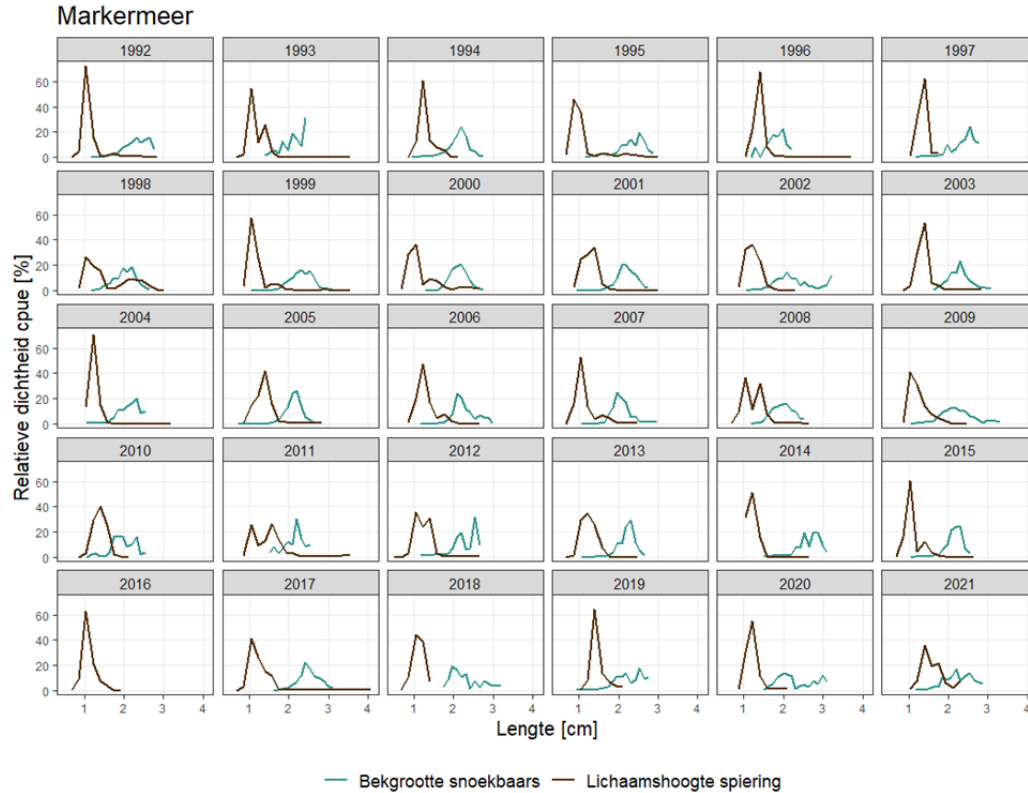
- Watertemperatuur (Degree-Day) uitgezet tegen lengte van 0+ snoekbaars
- Hoe warmer, hoe groter. Behalve in de "slechte snoekbaarsjaren" 2004, 2011, 2014, 2015, 2018, 2019 & 2021



Spiering IJsselmeer



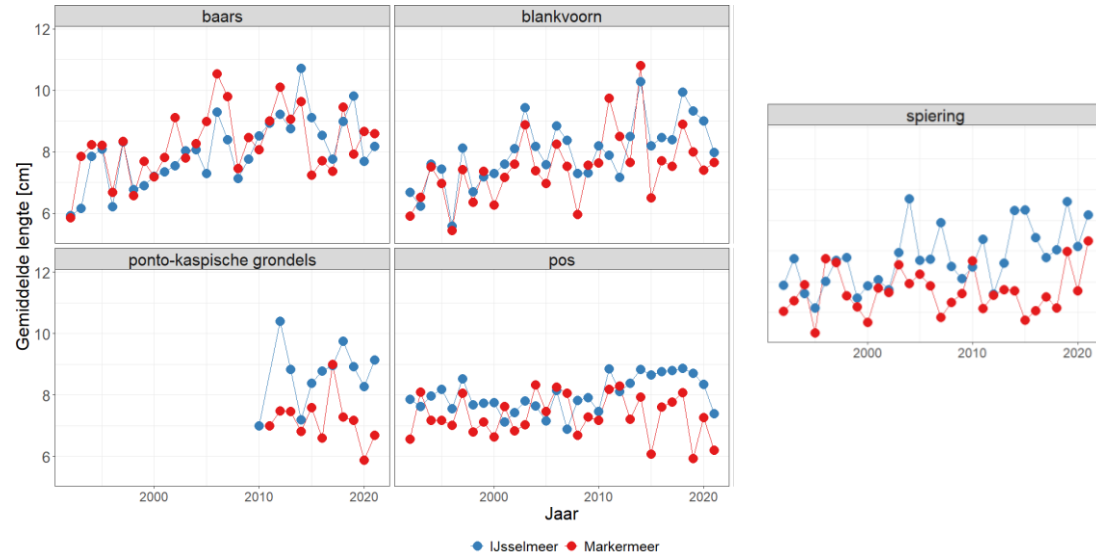
Spiering Markermeer



Grootte van andere prooivis

Markermeer

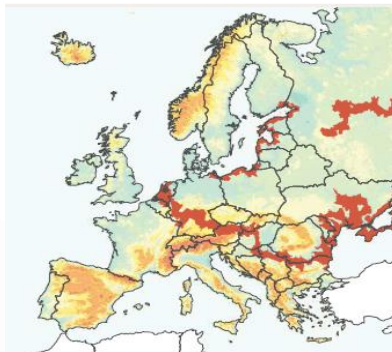
1. Spiering structureel kleiner in Markermeer
2. Snoekbaars minder afhankelijk van spiering
3. Ook andere prooi-soorten structureel kleiner



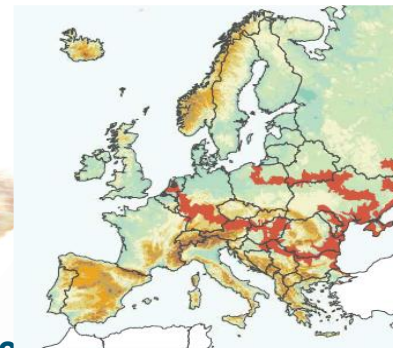
Invasieve grondels



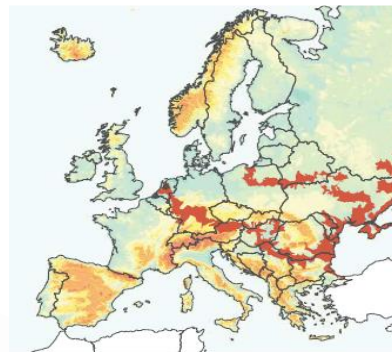
Zwartbekgrondel (2004)
Neogobius melanostomus



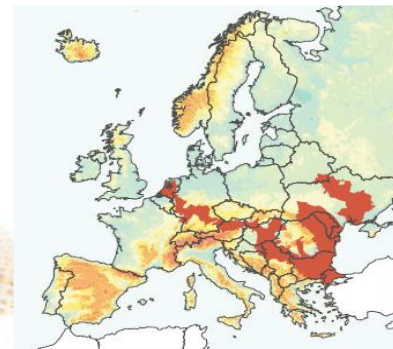
Kessler's grondel (2007)
Ponticola kessleri



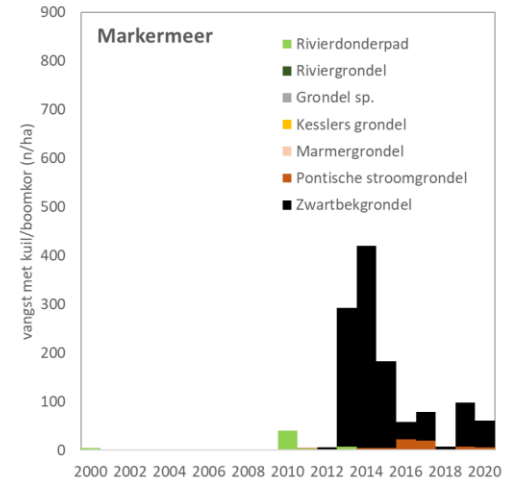
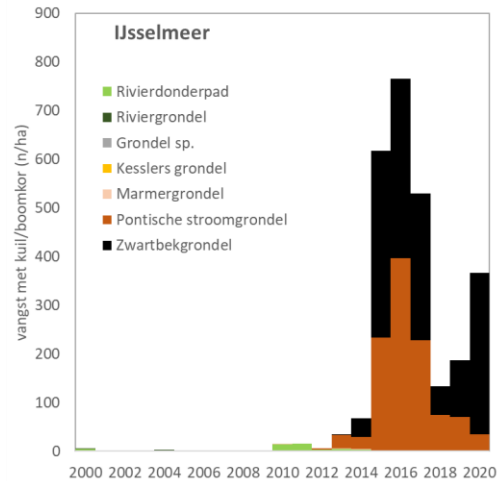
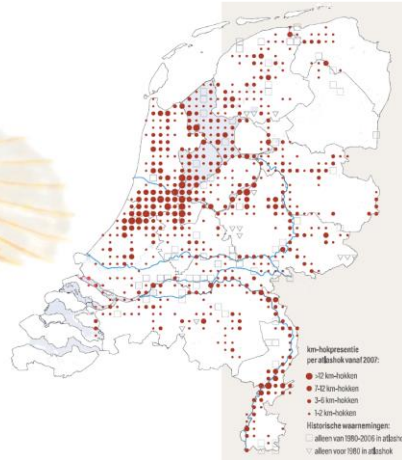
Pontische stroomgrondel (2008)



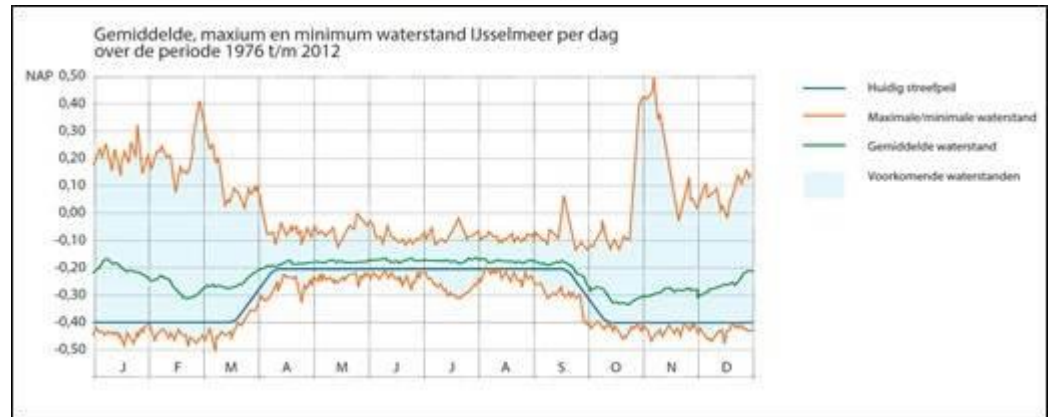
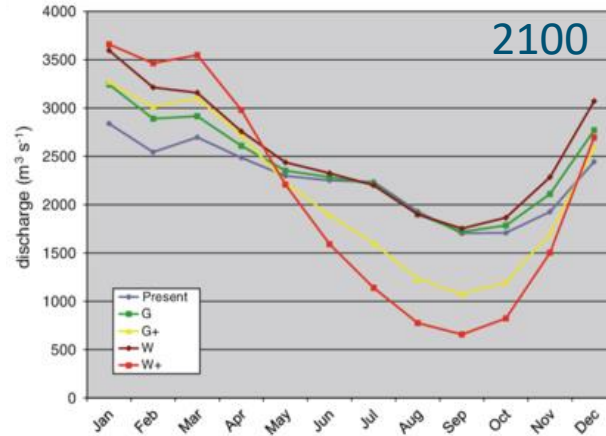
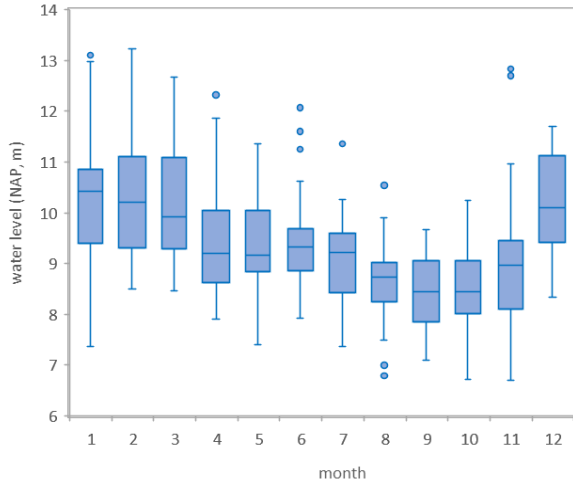
Marmergroundel (2002)
Proterorhinus semilunaris



Rivierdonderpad



Veranderingen in waterpeil door veranderingen in rivierafvoer



Data: Rijkswaterstaat

KIMA 2 (2023-2027)

