

# Koudeminnende kwabaal

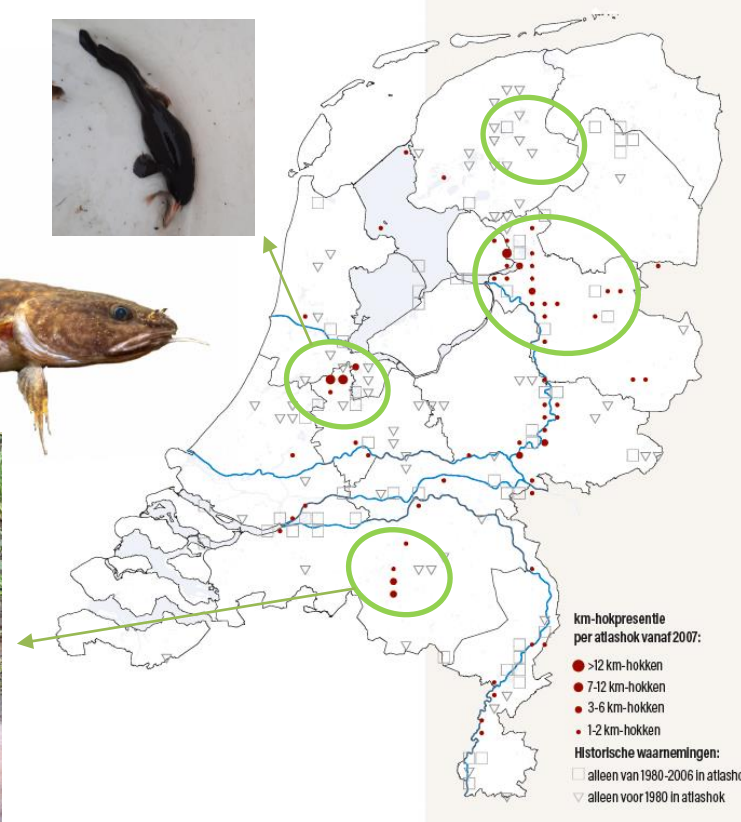
Wordt het de soort te heet onder de vinnen?

Mark Groen

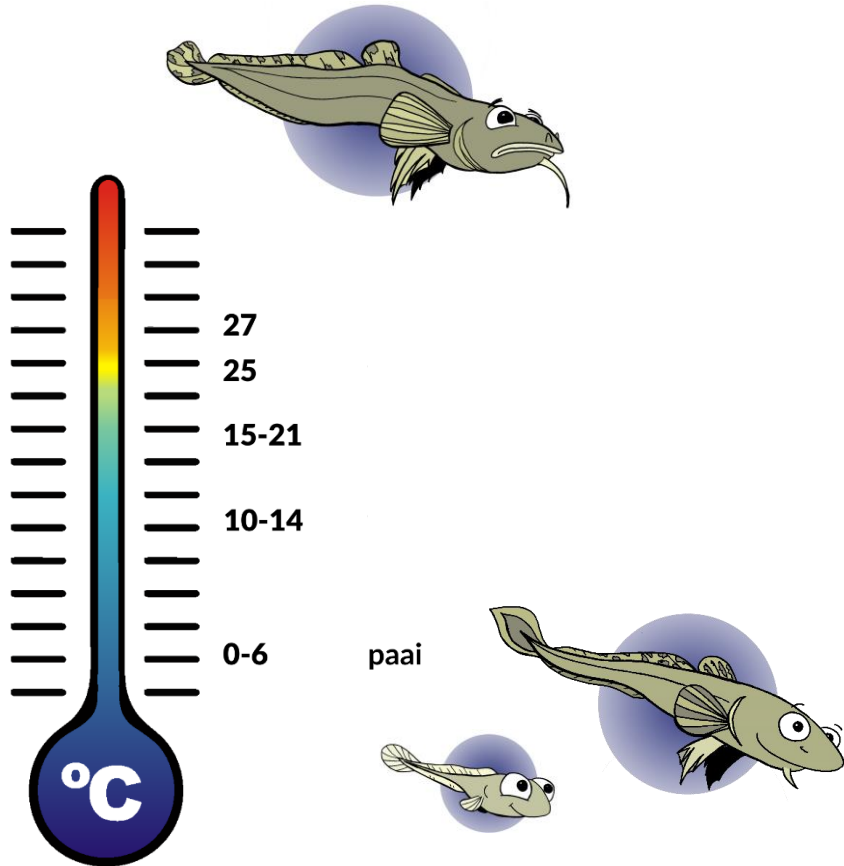


RAVON

# Wat is een kwabaal?



# Temperatuurgrenzen

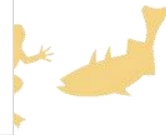
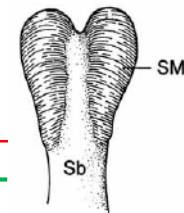
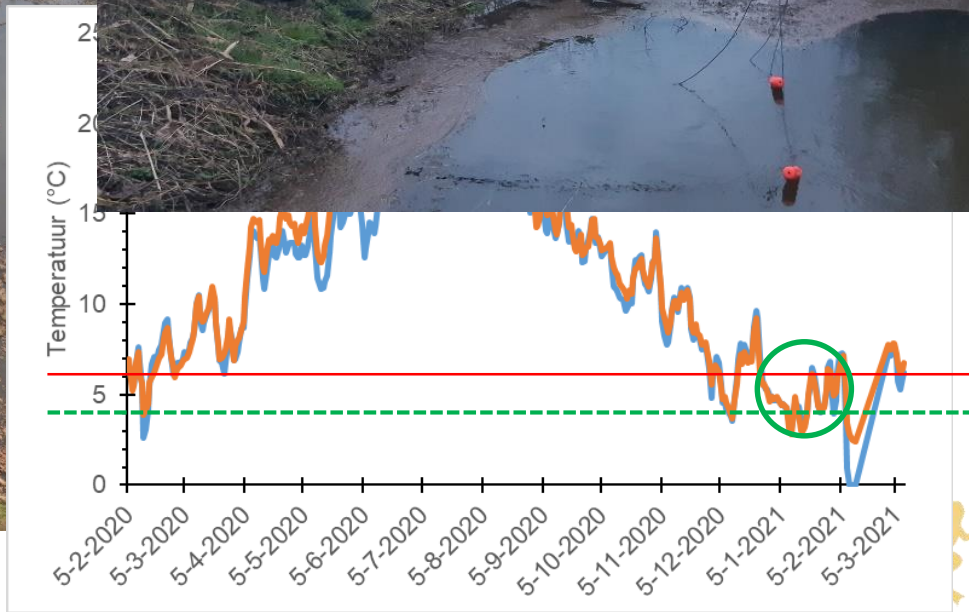


Looking for love under the ice: Using passive acoustics to detect burbot (*Lota lota*: Gadidae) spawning activity

Timothy Grabowski<sup>1</sup>  | Shawn P. Young<sup>2</sup> | Peter A. Cott<sup>3</sup>



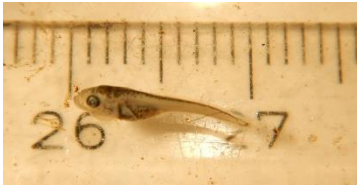
# Check met de NL situatie - voortplanting



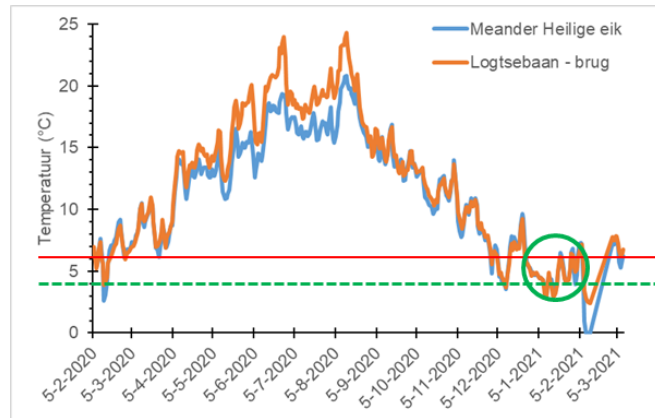
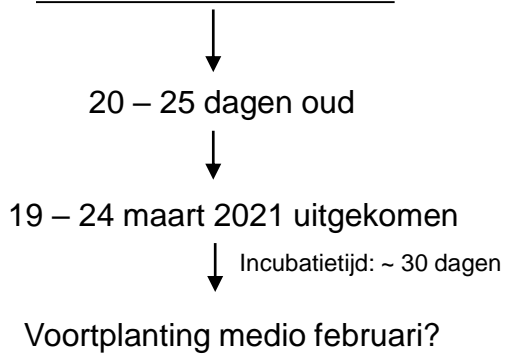
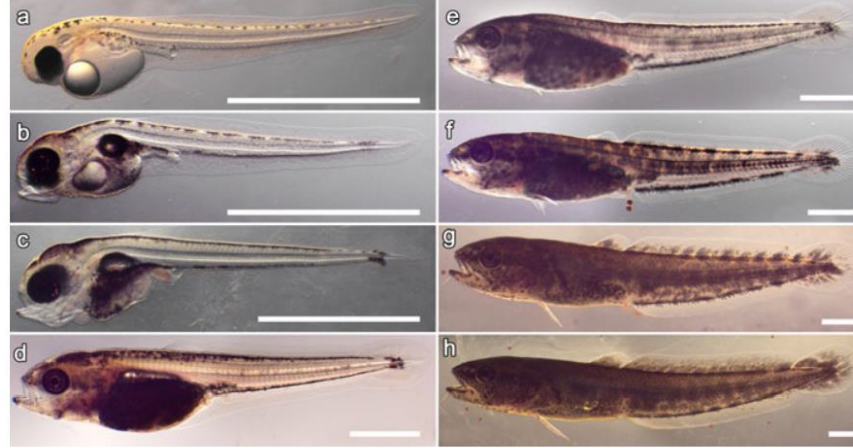
# Check met de NL situatie - larf



13 april 2021



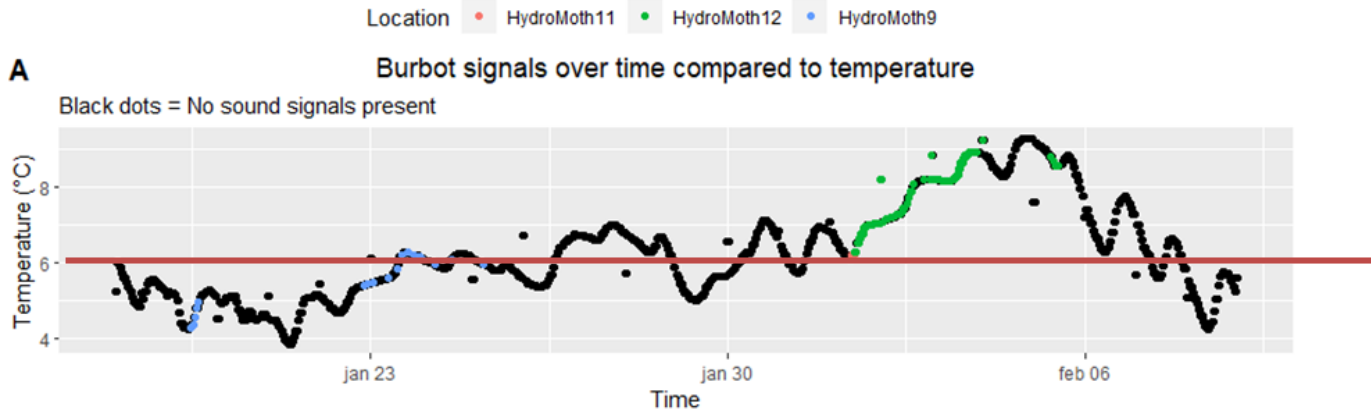
~11 mm



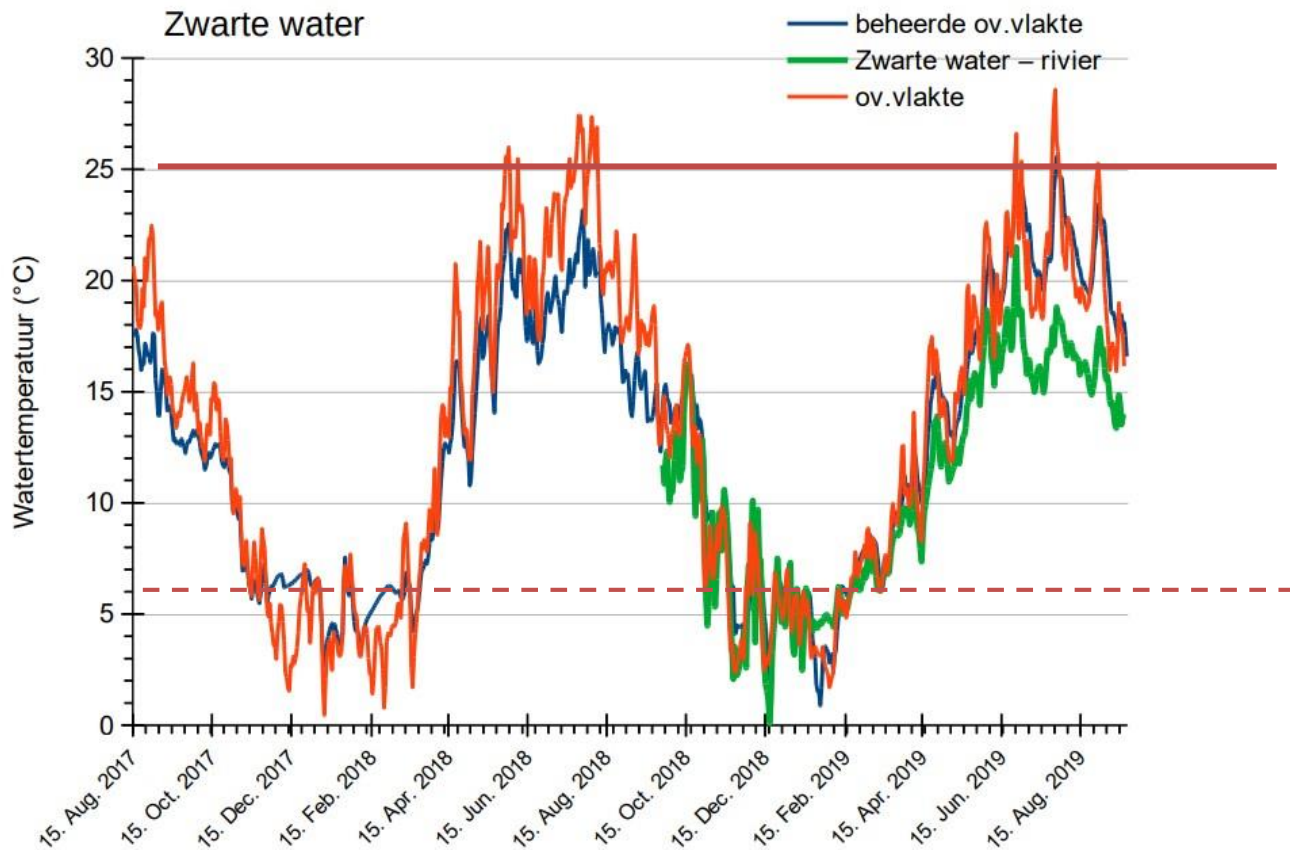
# Check met de NL situatie – (sub)adult



# Check met de NL situatie – trommelaars



# Watertemperatuur Zwarte water

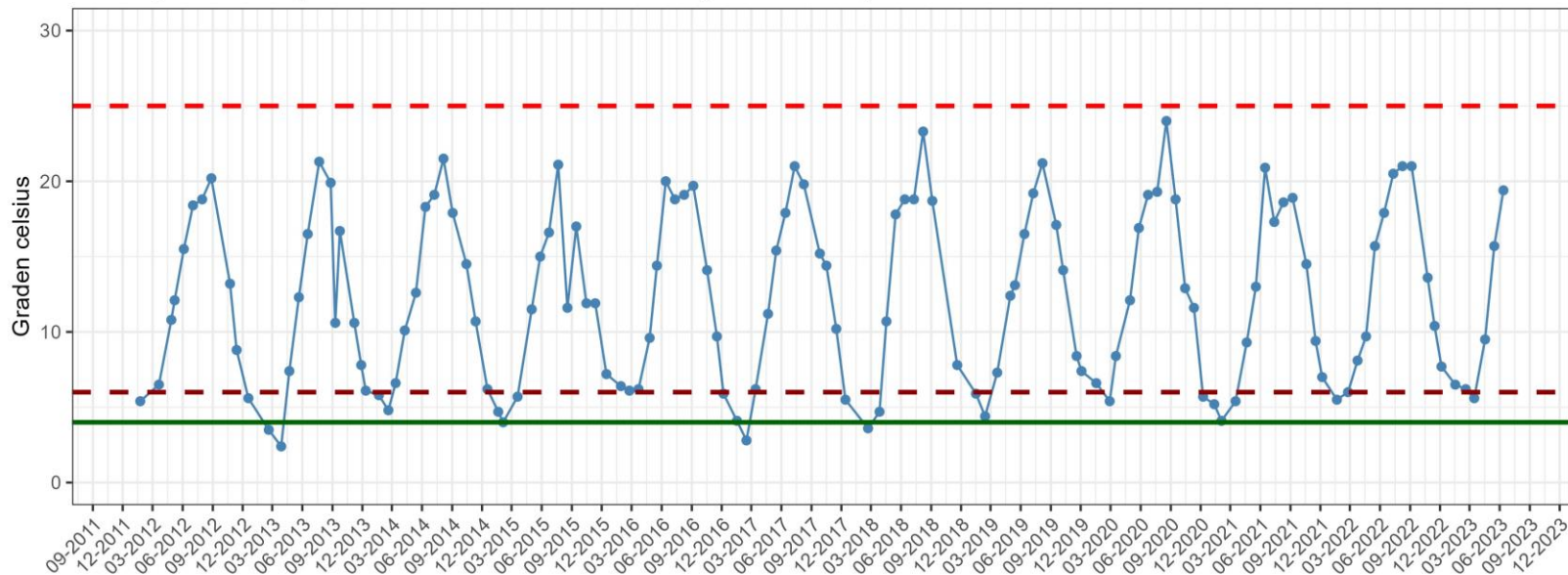




# Watertemperatuur Vinkeveense Plassen

- 5m diepte

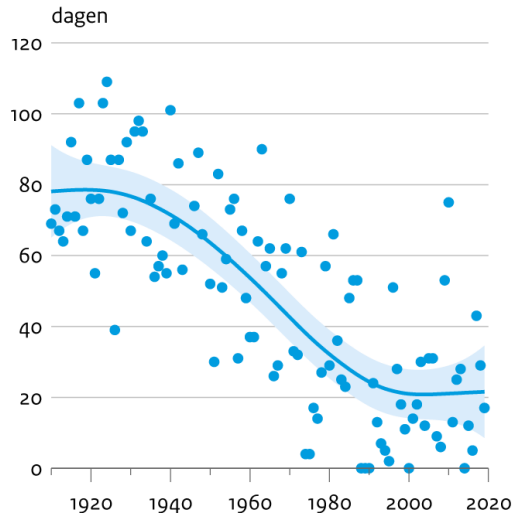
Verloop watertemperatuur Vinkeveense Plassen (2011 - 2023)



# Trend watertemperatuur – grote rivieren

## Aantal dagen met lage watertemperatuur

Rijn bij Lobith



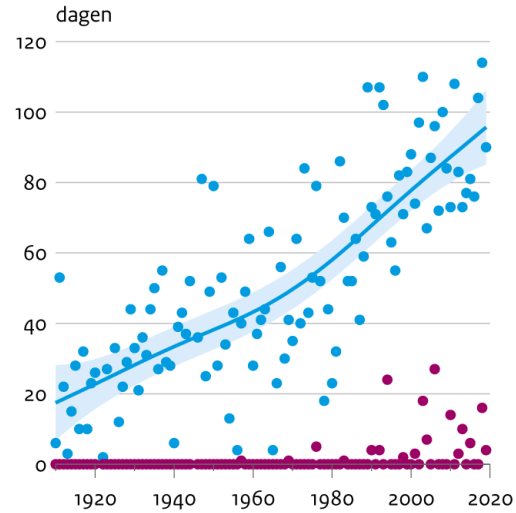
Kouder dan 5 °C

- Per jaar
- Geschatte trend
- Onzekerheid trend

Bron: RWS; bewerking PBL

## Aantal dagen met hoge watertemperatuur

Rijn bij Lobith



Warmer dan 20 °C

- Per jaar
- Geschatte trend
- Onzekerheid trend

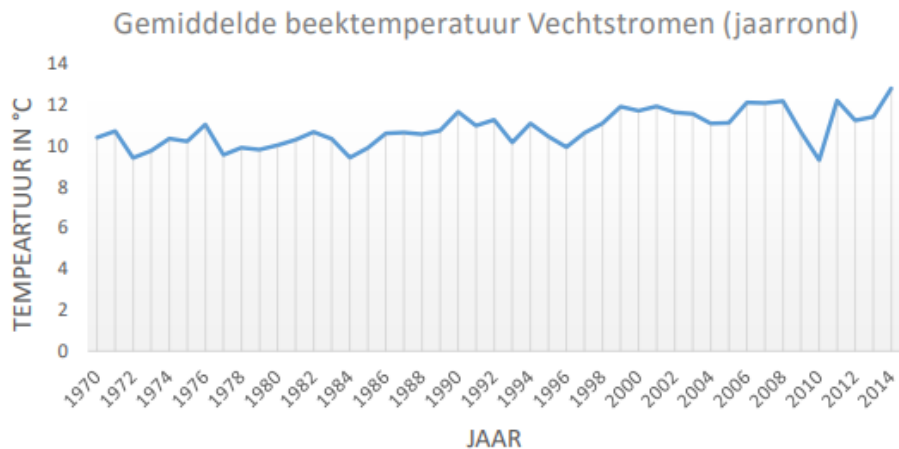
Bron: RWS; bewerking PBL

Warmer dan 25 °C

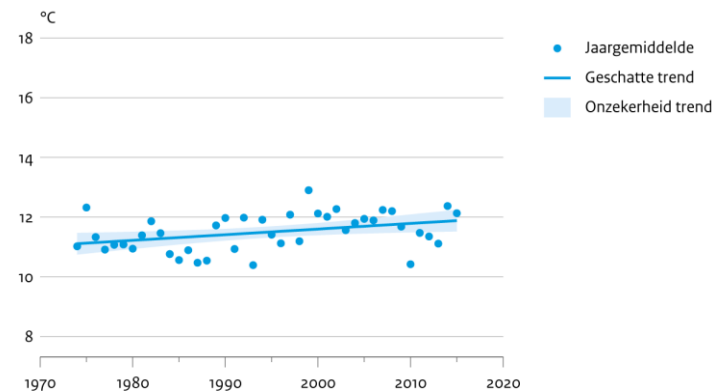
- Per jaar



# Trend watertemperatuur - beken



Gemiddelde watertemperatuur van beken in Drenthe



Bron: Limnodata, bewerkt door PBL

PBL/feb17  
www.clo.nl/nlo56605



# Klimaatbestendige beken

Begroeiing

Diepere delen

Kweldruk



**Bedankt!**

